

INSTALLATION INSTRUCTIONS-INSERT BATHTUB

Note: It is the installer/consumers responsibility to ensure:

- Products is not damaged prior to installation.
- The product has all its components: a bathtub and a plug waste
- They are happy with their purchase.

Installation instructions:

Self Supporting Full Base Board bath

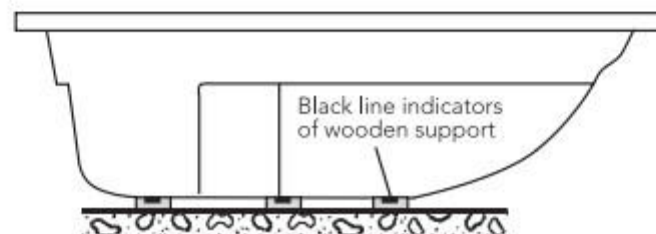
The design and rigidity of the baths allows for installation without a mortar bed. The base of the bath can be simply supported with timber supports as detailed.

Self supporting full base board can be identified by the indicator lines on the base of the bath. Position and fix timber supports to the base of the bath and floor with an approved floor and wall panelling adhesive or equivalent adhesive to provide a neat fit support. Ensure the rim of the baths is levelled during this procedure.

Figure D – supported with timber base

NOTE: All materials to comply with appropriate Australian & NZ Standards.

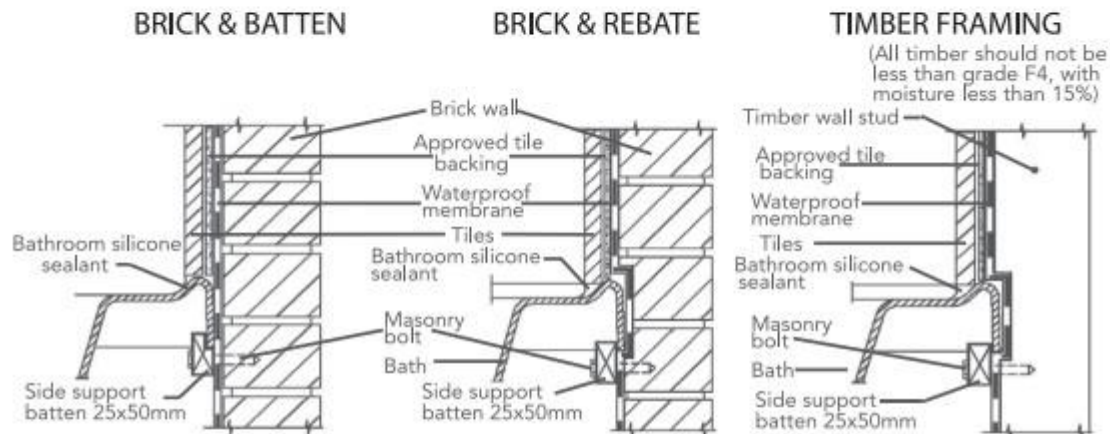
FIGURE D



WALL SECTION INSTALLATION

Install the bath, including baths with Euro and Economy frames against the wall sections using one of the methods below:

NOTE: All materials to comply with appropriate Australian & NZ Standards.



CLEANING YOUR BATH

- A) To preserve the polish surface, after using your bath, clean with soft cloth and warm soapy water to wash away any body oils or soap residue that forms a ring tide mark.
- B) As a weekly cleaner we recommend warm, soapy water. Do not use powders, pastes, creme cleaners, thinners, window cleaning sprays or dry cleaning liquid, etc.
- C) Stubborn marks or fine scratches may be polished out with Brasso.
- D) When coloured essentials oils are used, first test that the colour won't stain your bath. Always add oils into a bath full of water. Never pour them into an empty bath.